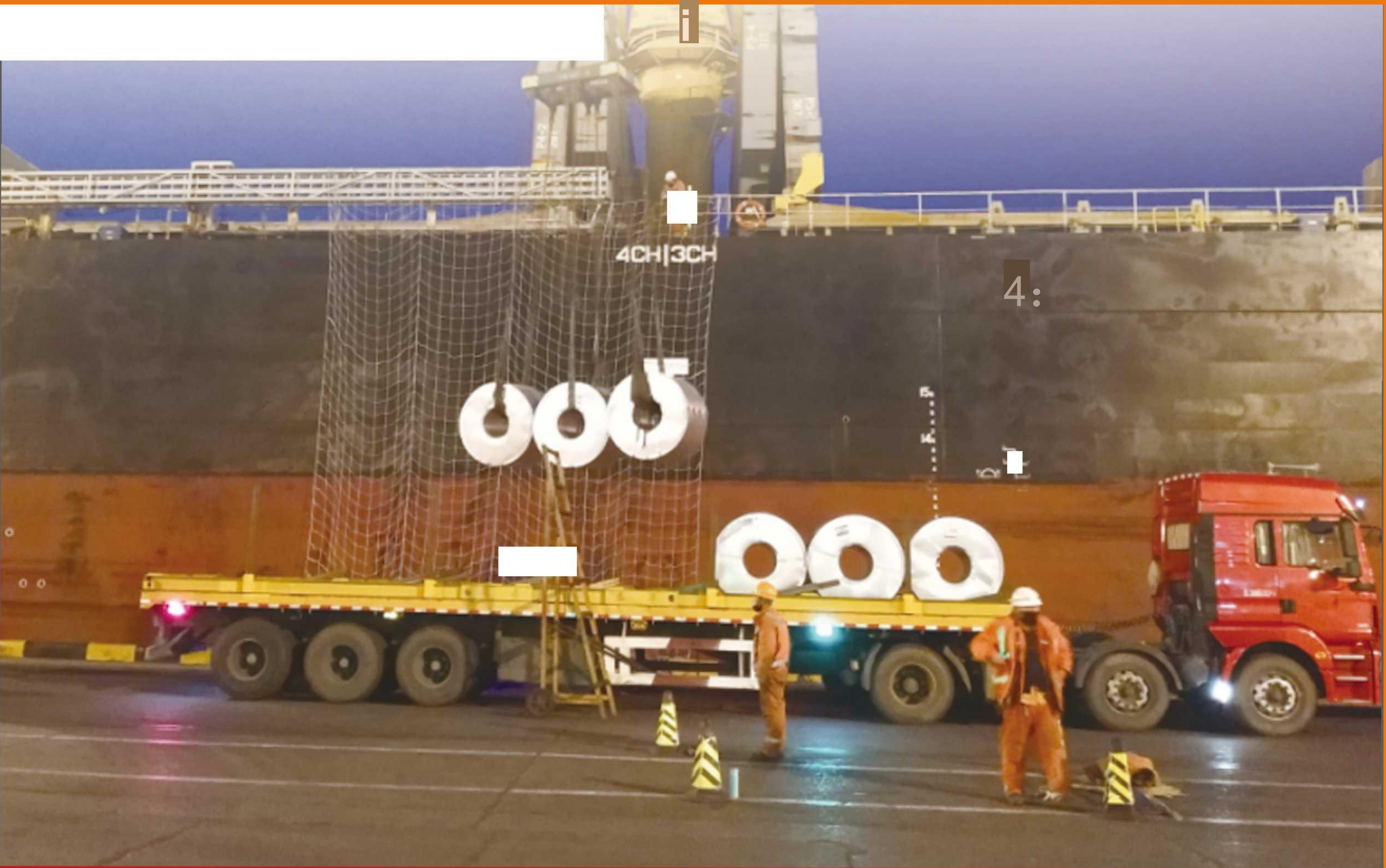


Shandong hongji New Material Co.,Ltd



Company profile

Shandong Hongji New Materials Co., Ltd. is a wholly-owned subsidiary of Mount Taishan Industrial Development Group Co., Ltd. It is a new industry company with sophisticated manufacturing equipment, independent research and development capabilities, and strong comprehensive strength.

The total investment of the company's project is 2.6 billion yuan, covering a total area of 780 acres and employing 1500 people. The main products are acid washed cold rolled sheet, galvanized sheet, aluminum zinc plated sheet, and color coated sheet. The annual production of 300000 tons of aluminum zinc plate and fingerprint resistant steel plate, 200000 tons of galvanized steel plate, and 500000 tons of color coated steel plate are widely used in fields such as construction, home appliances, and automotive manufacturing.

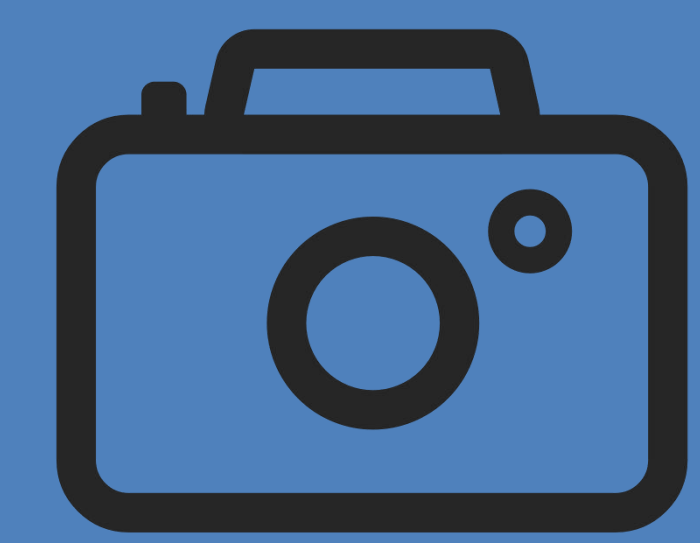
The galvanized color coating, aluminum zinc color coating, fluorocarbon paint color coating plates and high weather resistant color coating plates produced by the company are widely used in thermal power plants, fertilizer plants, and chemical plants.

Conventional paint film zinc layer color coated board is used in industrial buildings, warehouses, stations, etc. Hongji provides a minimum 15 year warranty service for its products, solving customers' concerns. The company produces a large number of patternless galvanized steel plates and colorless fingerprint resistant steel plates for export to Southeast Asia, South America, and Africa.

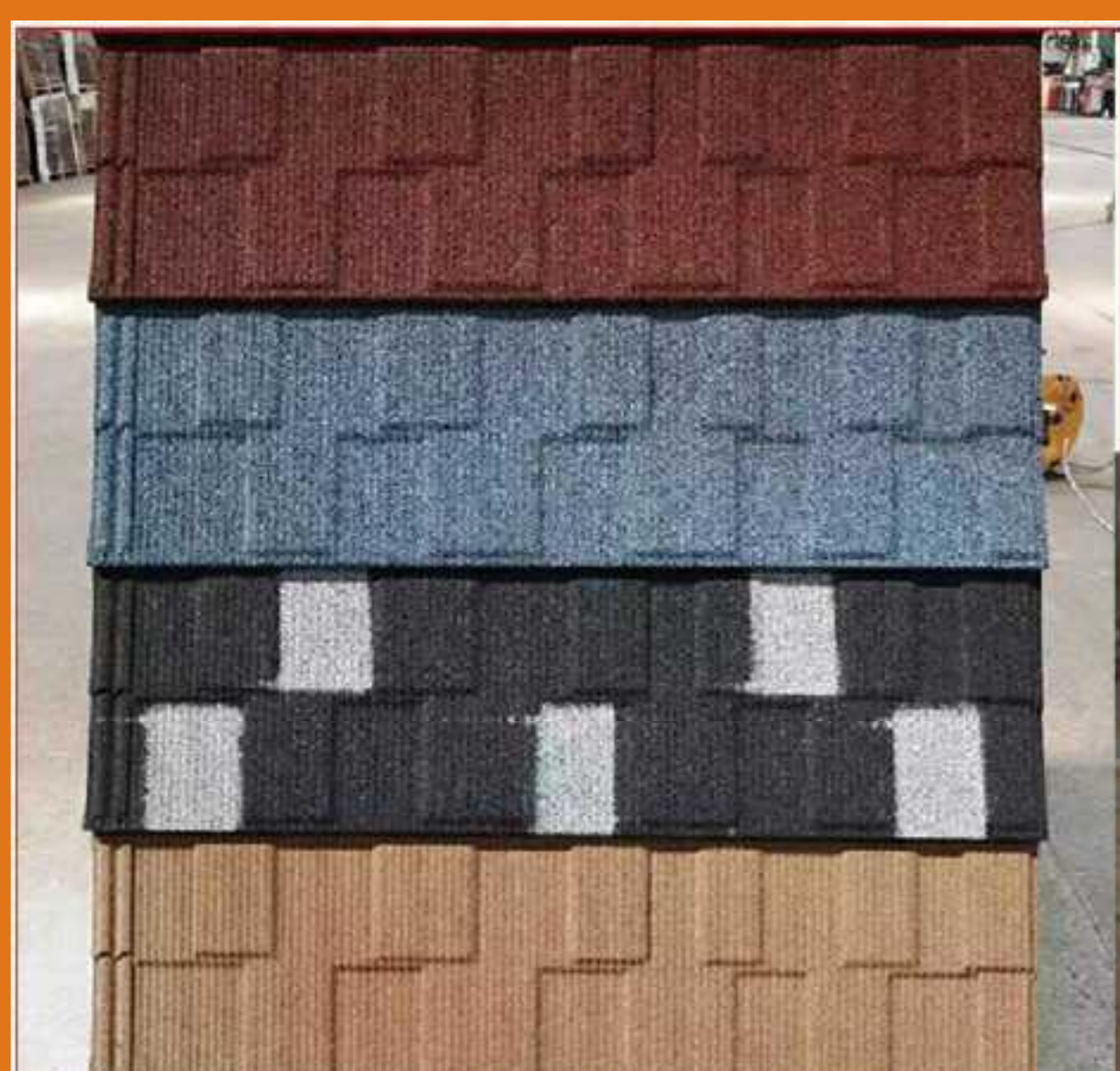
Shandong Hongji New Materials Co., Ltd. is committed to building a production base for high-precision and cutting-edge plates. Adhering to the concept of "quality casting reputation, service creating value", we will provide the highest quality products and most satisfactory services to global customers.



Actual photos taken by the manufacturer



方格瓦 Shingle Tile



彩瓦 Bond Tile



Cold Rolled Coil

Cold-rolled coil or sheet is a kind of steel sheet .The difference between rolls and flats is a cut-to-pack difference.Cold-rolled coils are obtained by pickling and cold-rolling hot-rolled cold-rolled coils. It can be said to be a type of cold rolled coil.Cold-rolled coils （annealed）：hot-rolled coils are obtained by pickling, cold rolling, bell annealing, leveling, and （finishing） .



Product Specifications

品名	冷轧硬卷板	Item Name	Cold Rolled Steel Coil
厚度	02-3.0毫米	Thickness	0.2•3.0mm
	600-1500毫米	Width	600-1500mm
硬度	50-71（CQ 级）	Hardness	50•71（CQ 级）
	45-55（DQ 级）		45-55（DQ 级）
屈服强度	<270（CQ 级）	Yield Strength	<270（CQ 级）
	<240（DQ 级）		<240（DQ 级）
抗拉强度	240-410（CQ 级）	Tensile strength	240-410（CQ 级）
	240-370（DQ 级）		240-370（DQ 级）
延伸率	28	Elongation Percentage	28
	34		34

Usage & Application

With annealing treatment, the Cold Rolled Steel Sheet is endowed with excellent performance of bend-proof and anti-impact that broadly adopted for the usage of food-grade products packageand other series of household accessories, such as door plate, goods shelf and file cabinet, etc.



Crafted printing door plate and other stamping products, automotive accessories parts.



Automobiles, printed iron drums, construction, building materials, bicycles and other industries

Galvanized Coil

Galvanizing refers to the surface treatment technology that coats a layer of zinc on the surface of metal, alloy or other materials to play the role of beauty and rust prevention. The main method used is hot-dip galvanizing. Including the following process steps, the hot-rolled coil is pickled, smoothed, heated, galvanized, smoothed, passivated, and coiled into a hot-dip galvanized coil through an acid-plating continuous production line.



Product Specifications

标准	ASTM DINGB JIS3302	Technical Standard	ASTM DINGB JIS3302
牌号	SGCC SGCD或客户指定	Grade	SGCC SGCD or customer's requirement
材料类型	一般商品级,冲压级	Type	Commercial Quality/DQ
厚度	0.11 -4.0mm	Thickness	0.11 -4.0 mm
宽度	600mm-1500mm	Width	600mm-1500mm
涂层类型	脏锌	Type of Coating	Hot dip galvanized
锌层厚度	30g-275g	Zinc Coating	30-275g
表面处理	钝化.光整、不涂油、涂油	Surface Treatment	Passivation/skin pass/non-oiled/oiled
表面结构	无锌花、小锌花、大锌花	Surface structure	No spangle/mini spangle/ big spangle
比 r+id		ID	508mm/610mm
	□uomm/o l umm		
卷重	3-10 吨	Coil weight	3-10metric ton per coil
包装	标准出口包装或定制	Package	Standard export package or customized
硬度	50-71 (CQ 级)	Hardness	HRB50-71 (cQ Grade)
	45-55 (DQ级)		HRB45-55 (DQ Grade)
屈服强度	140-300 (DQ级)	Yield strength	140-300 (DQ Grade)
抗拉强度	270-500(CQ 级)	Tensile Strength	270-500 (CQ Grade)
	270-420(DQ 级)		270-420(DQ Grade)
蹈由率	22 (CQ级厚度0.7以下)	Elongation Percentage	22(CQ Grade thickness less 0.7mm)
	24 (DQ级厚度0.7以下)		24(DQ Grade thickness less)

Usage & Application

According to the high performance characteristics of corrosion resistance and extensibility as wellas excellent further processing HDGI/GI is mainly adopted for construction, vehicle,transporta•tion and household appliances, especially for the steel structure construction and relative fields.



Basic plate of PPGL



Constructions and civil usage for household appliances such as ventilation pipe, piping coating and washing machine, oven.

Color Coated Coil

Using Hot Galvanized Coil as the substrate, color coated sheet is made by first going through surfacepretreatment then the coating of one or more layers of liquid coating by roll coating, and finallybaking and cooling.The coatings used including polyester, silicon modified polyester, high-durabili-ty polyester, polyvinylidene fluoride,epaxy and high corrosion -resisting coatings have gooddurability, corrosion-resistance and formability.Surface can be coated with film. Color coated sheet is widely used in building,transport, home appliances, solarenergy, furniture/ etc. In home appliances, it is mainly used as theside door plate of refrigerators, and shell of DVDs, air conditioners, and washing machines.



Product Specifications

标准	ASTM DIN GB JIS3312	Technical Standard	ASTM DIN GB JIS3312
牌号 材	SGCC SGCD或客户指定	Grade	SGCC SGCD or customer's requirement
料类型	一般商品级,冲压级	Type	Commercial Quality/DQ
厚度	0.13-2.0 毫米	Thicknes s	0.13-2.0mm
宽度	600-1500毫米	Width Top	600-1500mm
正面	底漆+聚酯面漆	side Back	Primer paint+polyester paint coating
背面	环氧底漆	side Coil	Primer epoxy
卷重	3•8吨	weight	3-8 tons per coil
包装	标准出口包装或定制	Package	Standard export package or customized
硬度	> =F	Hardness	> =F
180度弯曲	> = 3T	T Bend	> = 3T
反向冲击	>=9焦耳	Reverse Impact	>=9J
耐盐雾	> = 1000小时	Salt spray Resistance	> = 1000 hours

Usage & Application

With annealing treatment, the Cold Rolled Steel Sheet is endowed with excellent performance of bend-proof and anti-impact that broadly adopted for the usage of food-grade products package and other series of household accessories, such as door plate,goods shelf and file cabinet, etc.



Commercial building material plate, for example, corrugated plate and sandwich panel.



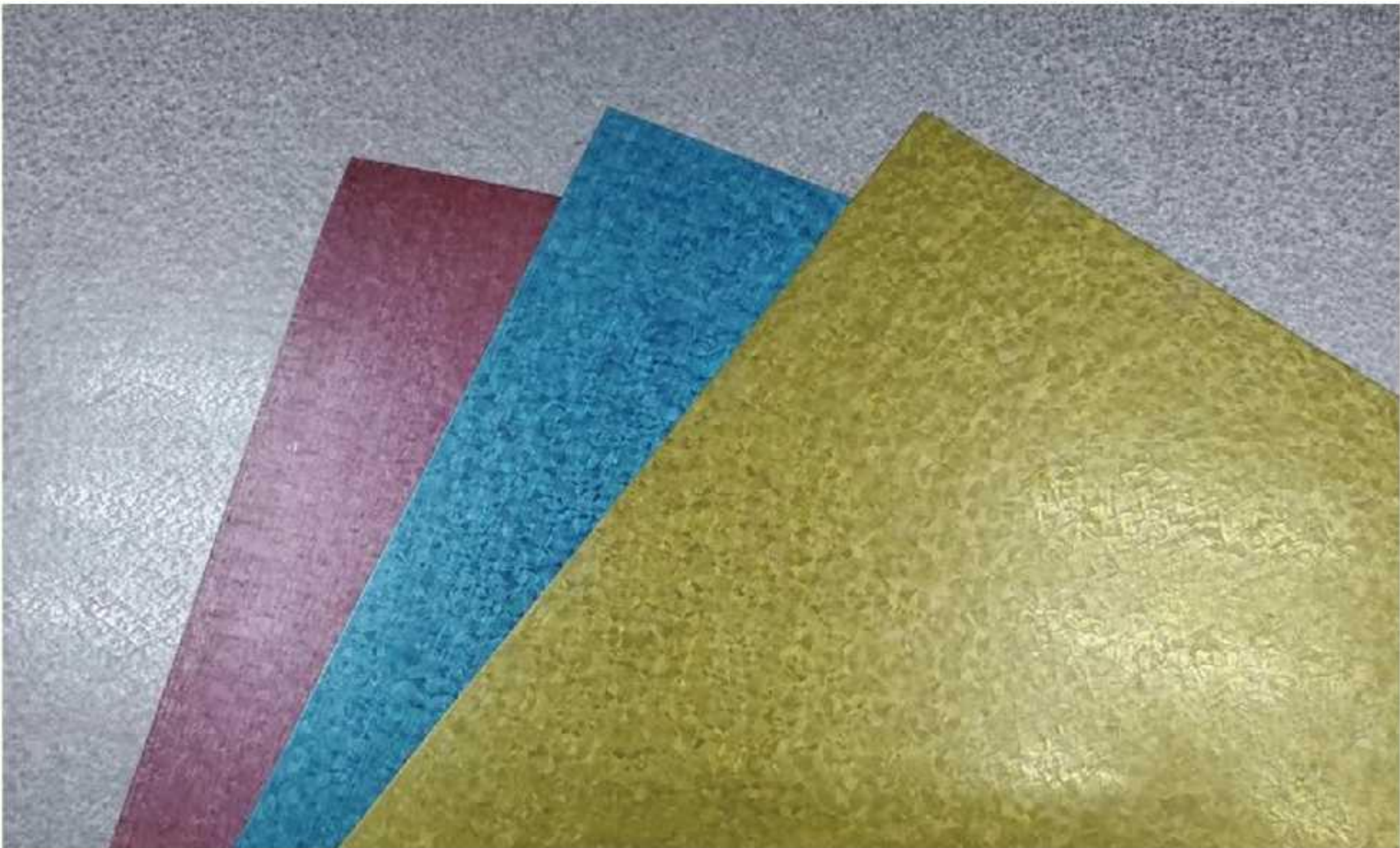
Automotives and household appliances, micro wave owen, refrigerator.



Galvalume Coil

Galvalume steel coil is made by sibley alloy, including 55% aluminum, 43.4% zinc, 1.6% silicon. With strong corrosion-resistance, 3 times more than galvanized steel.Beautiful spangle in the surface.They are mainly used in construction, automotives, metallurgy and household appliances.

Product Specifications



标准	ASTM DIN GBJIS3302	Technical Standard	ASTM DIN GBJIS3302
牌号	SGCC SGCD或客户指定	Grade	SGCC SGCD or customer's requirement
材料类型	一般商品级,冲压级	Type	Commercial Quality/DQ 0.13-1.2mm
厚度	0.13-1.2mm	Thickness	600mm-1250mm
宽度	600mm-1250mm	Width	ALU-ZINC coated 40g-150g/rrf
涂层类型	镀铝锌	Type of Coating	Passivation/skin pass/non-oiled/oiled
锌层厚度	40g-150g/rrf	Zinc Coating	Regular spangle/anti-finger
	钝化,光整、不涂油、涂油	Surface Treatment	508mm/610mm 3-10metric ton per coil
卷内径	正常锌花耐指纹 508mm/610mm	Surface structure ID	Standard export package or customized
卷重	3-10 吨	Coil weight	HRB50-71 (cQ Grade) HRB45-55 (DQ Grade) 140-300 (DQ Grade) 270-500 (CQ Grade) 270-420(DQ Grade) 22(CQ Grade
	标准出口包装或定制	Package	thickness less 0.7mm) 24(DQ Grade
硬度	50-71 (CQ 级) 45-55 (DQ级)	Hardness	thickness less)
屈服强度	140-300 (DQ级)	Yield strength	
抗拉强度	270-500(CQ 级) 270-420(DQ 级)	Tensile Strength	
延伸率	22(CQ级厚度0.7以下) 24 (DQ级厚度0.7以下)	Elongation Percentag e	

Usage & Application

According to the high performance characteristics of corrosion resistance and eoxtensibility as well as excellent further processing,GL is mainly adopted for construction vehicle, transportation and household appliances,especially for the steel structure construction and relative fields.



Basic plate of PPGL



Constructions and civil usage for household appliances such as ventilation pipe,piping coating and washing machine.oven.



AZM Coating Steel Coil

Aluminium magnesium zinc steel plate is a new high corrosion resistance coating steel plate,its composition is mainly composed of zinc, galvanized layer by zinc plus 11 %aluminum 3% of magnesium and trace amounts of silicon,compared with common galvanized and aluminized zinc products, coating adhesion quantity can achieve a better corrosion resistance,even because of the strong corrosion resistance, stainless steel or aluminum can be substituted in some areas to put into use. The anti-corrosion self-healing effect of cutting the end face part is a major feature of the product

Product Specifications

标准	ASTMA1046/A1046M	Technical Standard	ASTMA 1046/A 1046M
牌号 材	SGCC SGCD或客户指定	Grade	SGCC SGCD or customer's requirement
料类型	一般商品级,冲压级	Type Thickness	Commercial Quality/DQ
厚度	0.4-3.0 毫米	Width	0.4-3.0mm
宽度 涂	600-1500毫米	Type of Coating	600-1500mm
层类型	镀铝锌镁一	Thickness Coating	Aluzinc magnesium Coating
涂层厚度	80-450克/平方米 钝	Surface Treatment	80-450g/Sqm
	化,耐指纹 3•8吨 标	Coil weight Package	Passivation/Anti-finger
卷重	准出口包装或定制	Hardness	3-8 Tons
包装	HRB 45-90	Salt Spray	Standard export package or customized
硬度		Resistance	HRB 45-90
	>=2000小时		>=2000 Hours

Usage & Application

Products are mainly used in civil engineering and construction (keel smallpox, perforated plate, cable bridge), agricultural and animal (agricultural breeding greenhouse steel structure, steel components, greenhouses, feeding equipment), rail roads, electric power communication (transmission and distribution of high and low voltage switchgear, box-type substation), auto motor, industrial refrigeration, cooling tower, large outdoor air conditioning) used in industry and other industries, using field is very broad.



Civil engineering and construction (keel smallpox, perforated plate, cable bridge), agricultural and animal (agricultural breeding greenhouse steel structure, steel components, greenhouses, feeding equipment)



Electric power communication (transmission and distribution of high and low voltage switchgear, box-type substation), auto motor, industrial refrigeration, cooling tower, large outdoor air conditioning)

Metal roofing sheet series products

Can be customized



Roofing sheet making machine series products

Can be customized



Can be customized

Keel & light steel villa

